



pS2 mouse mAb(ABT265)

Catalog No	YP-Ab-15620
Isotype	IgG
Reactivity	Human
Applications	IHC;WB;IF
Gene Name	TFF1 BCEI PS2
Protein Name	pS2
Immunogen	Synthesized peptide derived from human pS2
Specificity	The antibody can specifically recognize human pS2 protein.
Formulation	Liquid in PBS containing 50% glycerol, 0.5% BSA and 0.36% sodium azide.
Source	Mouse, Monoclonal/IgG1, Kappa
Purification	The antibody was affinity-purified from mouse ascites by affinity-chromatography using specific immunogen.
Dilution	IHC-p 1:100-500, WB 1:200-1000, IF 1:100-500
Concentration	1 mg/ml
Purity	≥90%
Storage Stability	-20°C/1 year
Synonyms	Trefoil factor 1 (Breast cancer estrogen-inducible protein;PNR-2;Polypeptide P1.A;hP1.A;Protein pS2)
Observed Band	
Cell Pathway	Secreted .
Tissue Specificity	Found in stomach, with highest levels in the upper gastric mucosal cells (at protein level). Detected in goblet cells of the small and large intestine and rectum, small submucosal glands in the esophagus, mucous acini of the sublingual gland, submucosal glands of the trachea, and epithelial cells lining the exocrine pancreatic ducts but not in the remainder of the pancreas (at protein level). Scattered expression is detected in the epithelial cells of the gallbladder and submucosal glands of the vagina, and weak expression is observed in the bronchial goblet cells of the pseudostratified epithelia in the respiratory system (at protein level). Detected in urine (at protein level). Strongly expressed in breast cancer but at low levels in normal mammary tissue. It is regulated by estrogen in
Function	disease:Expressed in a number of carcinomas including breast (50%), pancreas (70-75%), stomach (50-55%), and large bowel (58%).,function:Stabilizer of the mucous gel overlying the gastrointestinal mucosa that provides a physical barrier against various noxious agents. May inhibit the growth of calcium oxalate crystals in urine.,similarity:Contains 1 P-type (trefoil) domain.,subunit:Heterodimer with GKN2; disulfide linked.,tissue specificity:Found in stomach, with highest levels in the upper gastric mucosal cells (at protein level). Detected in goblet cells of the



small and large intestine and rectum, small submucosal glands in the esophagus, mucous acini of the sublingual gland, submucosal glands of the trachea, and epithelial cells lining the exocrine pancreatic ducts but not in the remainder of the pancreas (at protein level). Scattered expression is detected in the epithelial cells of

Background

Members of the trefoil family are characterized by having at least one copy of the trefoil motif, a 40-amino acid domain that contains three conserved disulfides. They are stable secretory proteins expressed in gastrointestinal mucosa. Their functions are not defined, but they may protect the mucosa from insults, stabilize the mucus layer, and affect healing of the epithelium. This gene, which is expressed in the gastric mucosa, has also been studied because of its expression in human tumors. This gene and two other related trefoil family member genes are found in a cluster on chromosome 21. [provided by RefSeq, Jul 2008],

matters needing attention

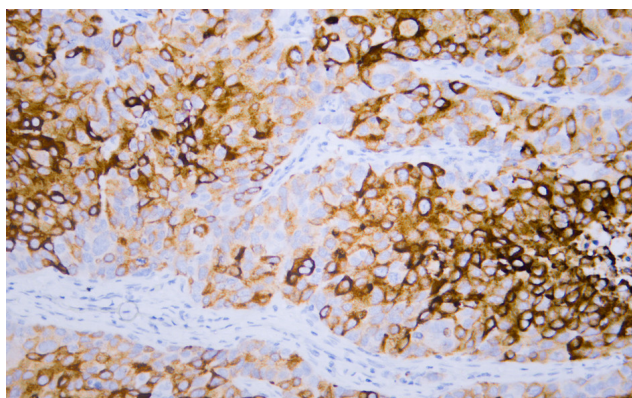
Avoid repeated freezing and thawing!

Usage suggestions

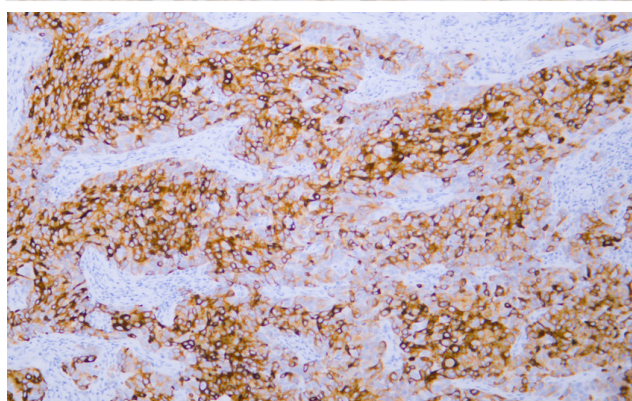
This product can be used in immunological reaction related experiments. For more information, please consult technical personnel.



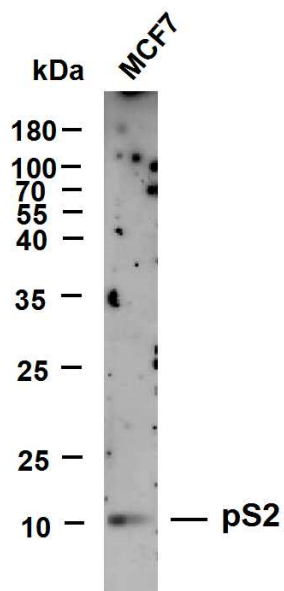
Products Images



Human breast carcinoma tissue was stained with Anti-pS2 (ABT265) Antibody. Secondary Antibody was Goat anti Rabbit/Mouse polymer HRP, Ready to Use (RS0011) at 37° 45min.



Human breast carcinoma tissue was stained with Anti-pS2 (ABT265) Antibody. Secondary Antibody was Goat anti Rabbit/Mouse polymer HRP, Ready to Use (RS0011) at 37° 45min.



MCF7 whole cell lysates were separated by 12% SDS-PAGE, and the membrane was blotted with anti-pS2 (ABT265) antibody. The HRP-conjugated Goat anti-Mouse IgG (H + L) antibody was used to detect the antibody. Lane 1: MCF7 Predicted band size: 9kDa Observed band size: 9kDa